

**GB 1886.211—2016**

---

( )

2016-08-31

2017-01-01

---

( )

1

(*Camellia sinensis* L.) ,  
( )。

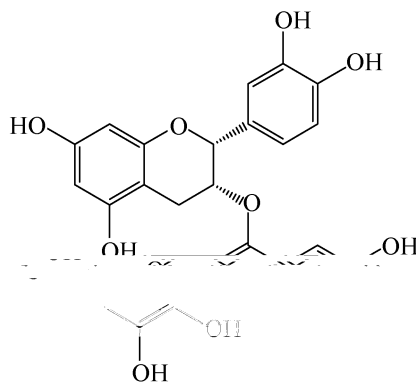
2 、 、

2.1 (EGCG)

: (2R, 3R)-5,7- -2-(3,4,5-

2.3 (ECG)

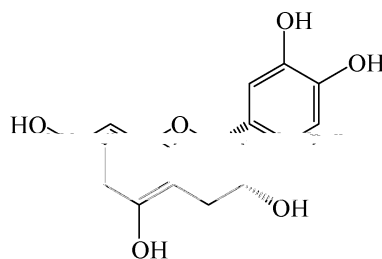
: (2R,3R)-2-(3,4- )-5,7- -3- -3,4,5-  
 : C<sub>22</sub>H<sub>18</sub>O<sub>10</sub>  
 :



: 442.37( 2013 )

2.4 (EC)

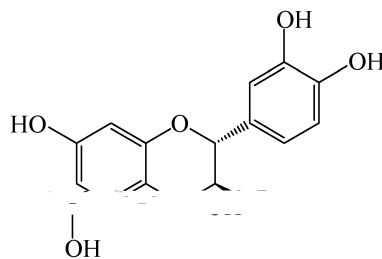
: (2R,3R)-2-(3,4- ) -3,5,7-  
 : C<sub>15</sub>H<sub>14</sub>O<sub>6</sub>  
 :



: 290.27( 2013 )

2.5 (C)

: (2R,3S)-2-(3,4- ) -3,5,7-  
 : C<sub>15</sub>H<sub>14</sub>O<sub>6</sub>  
 :



: 290.27( 2013 )

3

3.1

1 .

1

