

GB 1886 170—2016

5'-

2016-08-31

2017-01-01

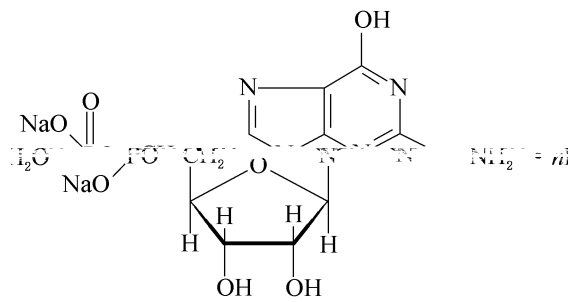
5'-

1

2

2 1

2 2



2 3

2 4

3

3 1

1

A

A 1

A 2 5'-

A 2 1

A 2 2

A 2 3

A 2 3 1

A 2 4 2

—

—

A 3 5%

A 3 1

A 3 2

A 4 pH 5%

A 4 1

A 4 2

A 5

A 5 1

A 5 1 1

A 5 1 2

A 5 2

A 5 2 1

A 5 2 2

A 5 3

A 5 4

A 6

A 6 1

A 6 2

A 6 3

A 6 4

A 7

A 7 1

A 7 1 1

A 7 1 2

A 7 2

A 7 3
